



GALLAGHER  
ROBERTSON

www.glink.com

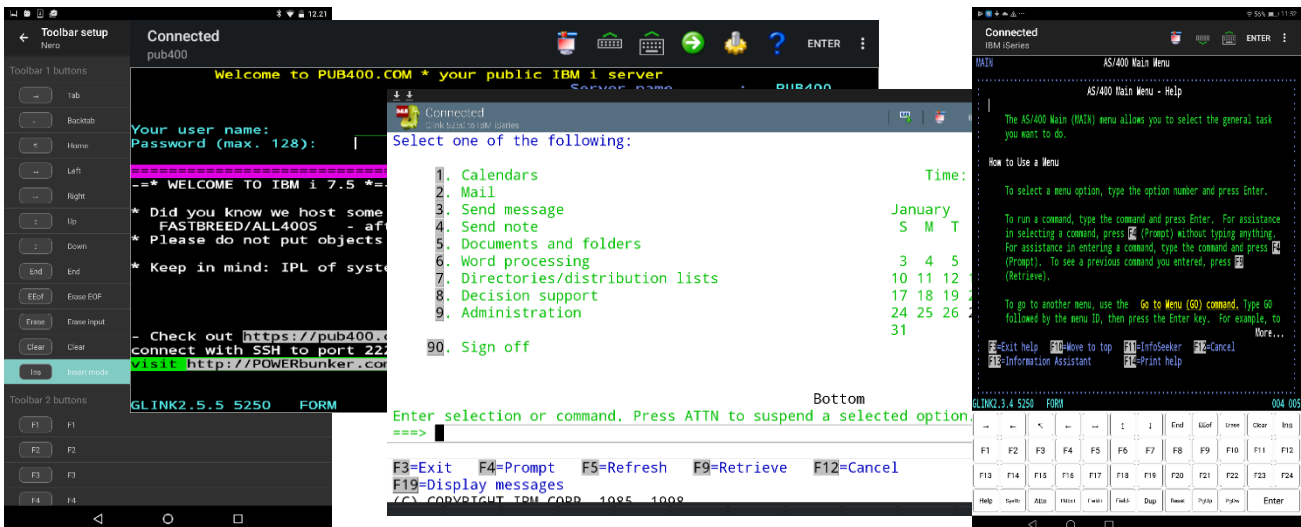


## Multisession TN3270 Terminal Emulation for Android!

Glink 3270 for Android is an IBM 3270 terminal emulator for Android mobile computers, tablets, phones and Chrome devices. It is used to access enterprise applications running on IBM mainframes. Glink 3270 has terminal emulation for the IBM 3270 terminals and uses TN3270 protocols to communicate with the servers. The communication can be encrypted, using SSL/TLS protocols.

Glink 3270 runs on everything from wearable computers, handheld computers, vehicle mounted computers, tablets and office computers and is used in all kinds of environments: Retail, Transportation and Logistics, Warehouse and Distribution, Manufacturing, Field Operations, Healthcare and Public Sector.

Glink 3270 allows you to have multiple concurrent server sessions running at the same time. It has a configurable multi-line toolbar with function keys and macros, configurable hotspots, physical keys can be mapped to function keys or macros, and with configurable font size, colors, cursors, keyboard shortcuts, auto-connect and auto-login Glink 3270 works very well on all display sizes.



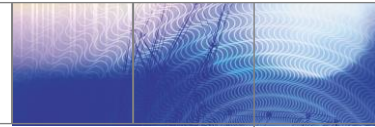
### What is Glink 3270 for Android?

Glink 3270 for Android is an App for TN3270 terminal emulation and communication with legacy servers. It includes terminal emulations for the IBM MVS, CICS, IMS, z/OS, z/VM, z/VSE, z/TPF server environments. Glink 3270 uses standard TCP/IP protocols like TN3270 for communications with the IBM legacy systems and can secure all protocols with the use of Secure Socket Layer (SSL/TLS) encryption.

Mapping of physical keys and buttons, configurable hotspots for function keys, numbers, characters and URLs and a configurable multiline toolbar where you put frequently used operations, recorded as macros, and function keys makes Glink a very powerful tool.

### In Glink 3270 for Android we:

- have ported decades of experience, and proven emulation and communication code, from Glink for Windows to Android. We have also included the popular and powerful macro feature that all Glink users know and love
- provide you with reliable terminal emulation software that you can install and manage from your MDM system
- support multiple host sessions running concurrently with in-app switching between the sessions
- support Zebra, Honeywell, Datalogic, AML, Denso, M3 Mobile, Point Mobile, Urovo, CipherLAB, Unitech, Seuic and Socket Mobile barcode scanners, Bluetooth keyboards and barcode scanning with built-in camera



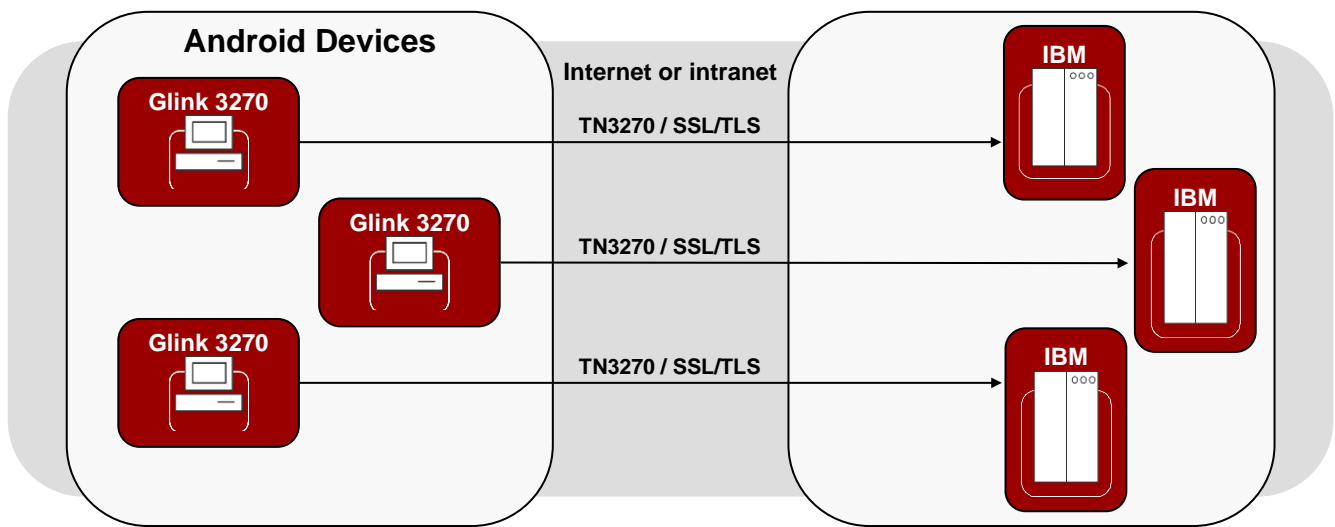
**Look-and-Feel:**

- Glink 3270 is compliant with the design guidelines for the Android devices. Zooming, scrolling, selection, focus, enabling/disabling of keyboard are implemented the same way as in the browser
- A configurable multi-line toolbar can be customized to meet your needs. Add your own macros for frequently used operations, change button texts, move buttons around and remove unused function keys
- Glink's macro feature saves you from a lot of typing and is a very useful tool for automating logon or frequently used operations involving multiple interaction steps with the host. The macros are easily assigned to buttons on the toolbar with your selected text, or to physical keys

**Installation and configuration:** Glink 3270 for Android is a client App, purchased on the Google Play Store, G&R webshop or one of G&R's partners and installed and setup on each user's device

**Security:** Glink 3270 for Android supports SSL/TLS for encryption of TN3270 host communication. Username/ password or private keys can be used for authentication. Configuration can be protected by a password.

**Print:** Glink supports both print screen and printing from the server. Either in separate print sessions or in the terminal session from Unix/Linux hosts



**Emulations:**

IBM3270 models: 3278-1/3278-2/3278-3/3278-4/3278-5/  
3278-1E/3278-2E/3278-3E/3278-4E/3278-5E/3279-2/3279-3/  
3279-2E/3279-3E/3287-1

**Communications:**

**TCP/IP:** TN3270/TN3270E

**Security:**

Secure Socket Layer (SSL/TLS) for encrypted host communication. Displays server certificate from top menu

**Physical keys/buttons, Toolbar and Macros:**

Configurable hotspots for function keys, numbers, characters and URLs. A configurable multi-line-toolbar allows you to assign recorded multi-step macros to buttons with your own text. Rearrange, rename and remove keys as you want. Map physical keys and buttons to macros and function keys.

**Scroll-back buffer:**

Configurable scroll-back buffer contains the history of your server session. Copy, print or e-mail scroll-back buffer content.

**Colors:**

Sixteen foreground and eight background adjustable colors

**Print/e-mail:**

Print or e-mail host print, terminal emulation content or scroll-back buffer content

**Keyboard and barcode scanning:**

On screen standard keyboard and Bluetooth keyboards. Zebra, Honeywell, Datalogic, AML, Denso, M3 Mobile, Point Mobile, Urovo, Cipherlab, Unitech, Seuic, Socket Mobile, camera and Bluetooth scanners supported for barcode scanning

**Program text languages:**

English, German, French, Portuguese and Norwegian

**Font style:**

Choice between Plain, Bold, Italic and Bold & Italic

**Host sessions and configurations:**

Supports multiple concurrent sessions and MDM/EMM Android Enterprise managed configurations

**Requirement:**

Android version 4.4 or later. Supports mobile computers, Tablets, Smartphones and Chrome OS devices